

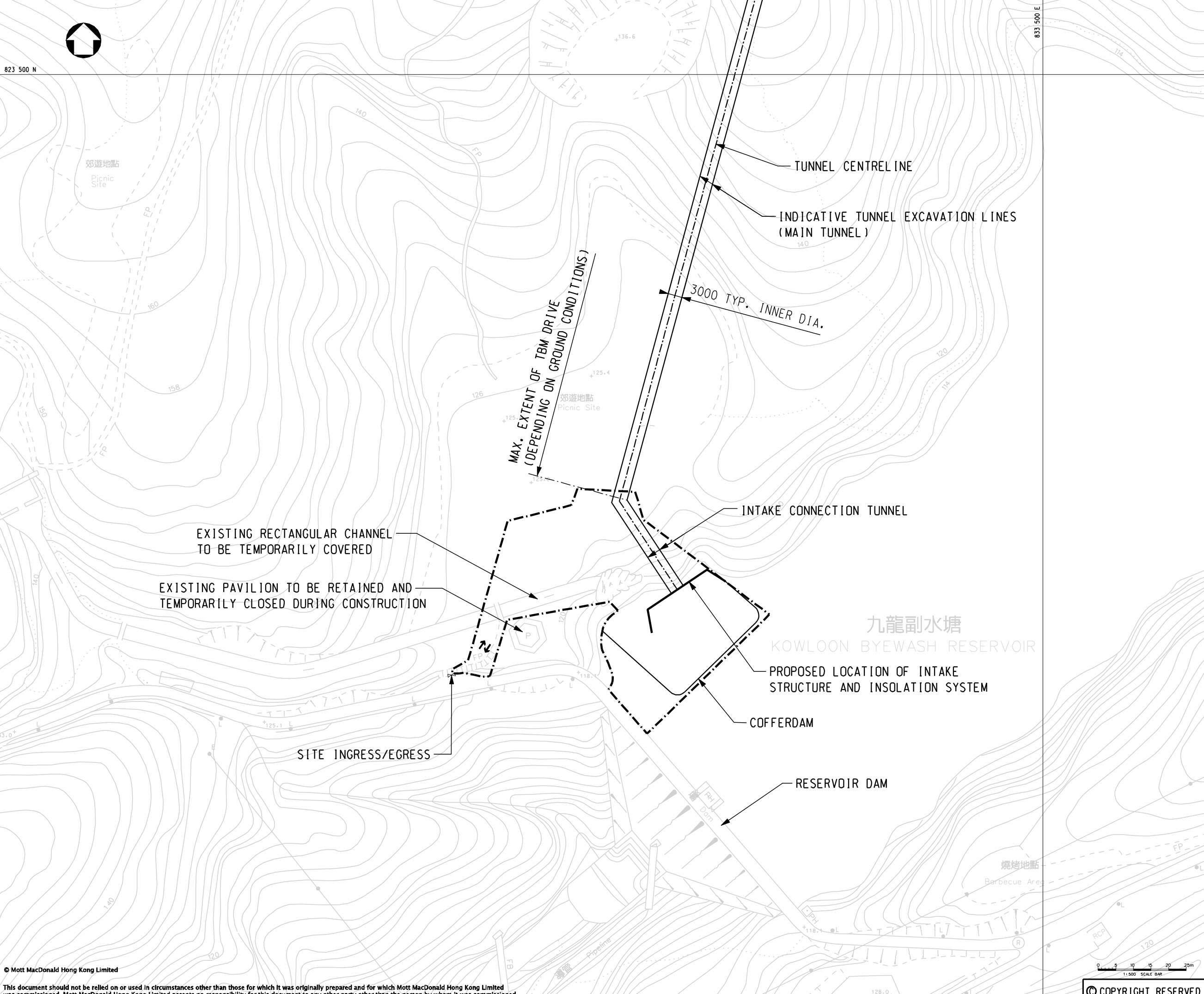


NOTE:  
DESIGN DETAILS OF THE COFFERDAM WILL BE DETERMINED BY THE CONTRACTOR.


LEGEND:  
- - - - - WORKSITE AREA

823 500 N

833 500 E



P1	NOV 08	MING	FIRST ISSUE	CWK	AFK
Rev	Date	Drawn	Description	Ch'kd/App'd	

Client  
 THE GOVERNMENT OF THE HONG KONG  
 SPECIAL ADMINISTRATIVE REGION  
 WATER SUPPLIES DEPARTMENT

 Mott MacDonald  
 Mott MacDonald Hong Kong Ltd  
 7th Floor  
 West Wing Office Building  
 New World Centre  
 20 Salisbury Road  
 Tsim Sha Tsui, Kowloon  
 Hong Kong  
 Tel: 2828 5757  
 Fax: 2827 1823  
 Web: www.mottmac.com.hk

Project  
 Agreement No. CE55/2006(EP)  
 Inter-reservoirs Transfer Scheme (IRTS)  
 Water Tunnel between Kowloon Byewash  
 Reservoir and Lower Shing Mun Reservoir  
 Environmental Impact Assessment  
 Investigation

Title  
 ENVISAGED SITE WORKS  
 NEAR INTAKE END

Designed	CWK	Eng.Chk.	CWK
Drawn	MING	Coordination	CWK
Dwg.Chk.	CWK	Approved	AFK

Scale	Project	Status
1:500@A1	240564	INF
	CAD File	Rev
	J:\240564\REPORT\ENV\EIA_REPORT1-08126\FIGURE-2-7.dgn	P1

Drawing No. FIGURE 2-7

